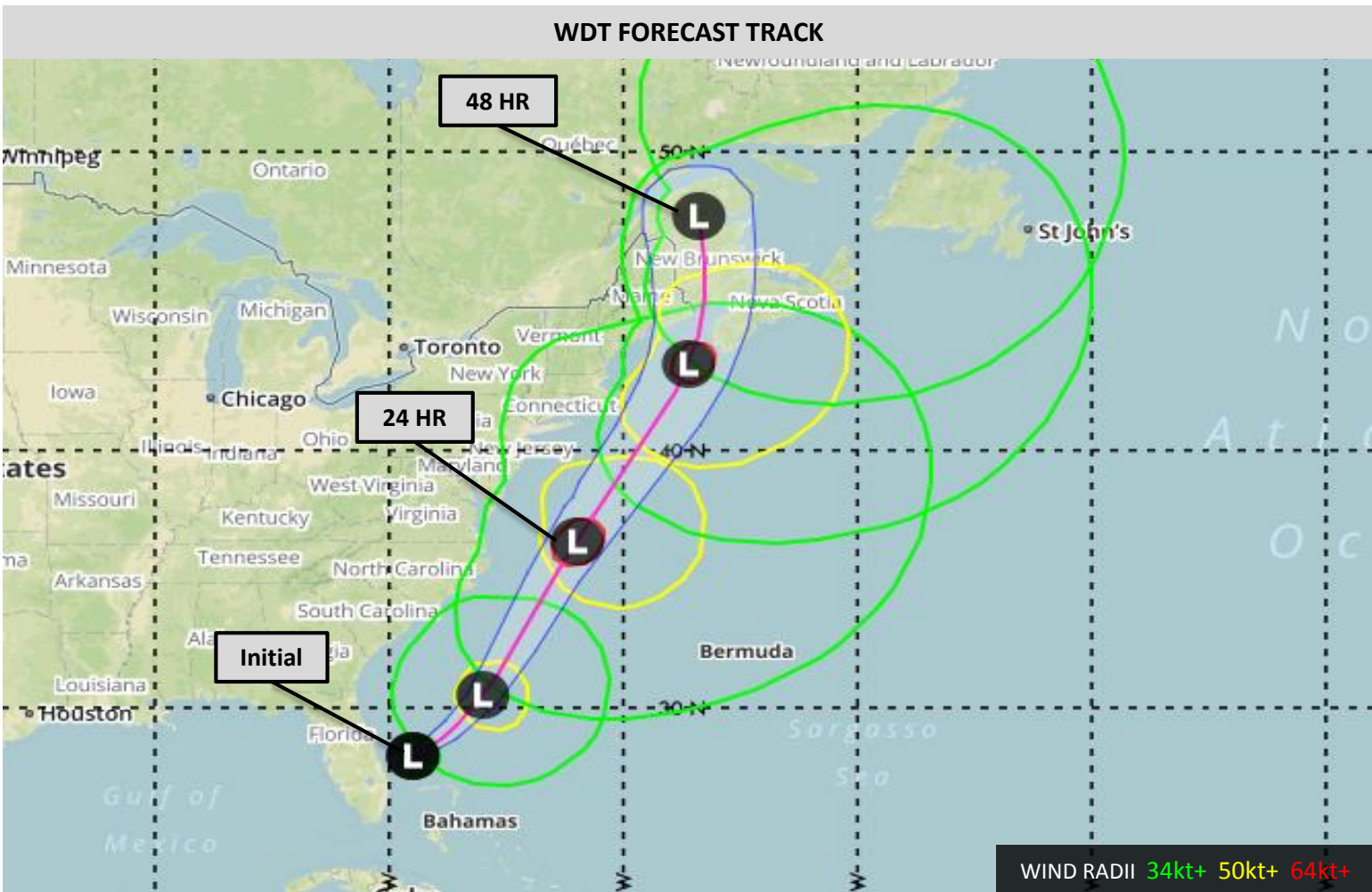


Advisory #1

Effective: January 3, 2018 1500 UTC

Storm Center	28.0N 79.0W (475nm SSW of Cape Hatteras, NC)			
Current Movement	Northeast at 15 Knots			
Sustained Winds/Gusts	40 knots / 50 knots			
34 kt Wind Radii	60 NE	60 SE	10 SW	10 NW
50 kt Wind Radii	0 NE	0 SE	0 SW	0 NW
64 kt Wind Radii	0 NE	0 SE	0 SW	0 NW
Forecast Trend	Rapid intensification while tracking northeast offshore the US East Coast.			


WDT Forecast Positions and Max Winds

Track Forecast Confidence: Average				Intensity Forecast Confidence: Below Average		
Date		Forecast Time/Hour		Position	Sustained Winds	
Wed	Jan 3	1500 UTC	Initial	28.0N 79.0W	40 KT	45 MPH
Thu	Jan 4	0000 UTC	12 Hour	30.5N 76.0W	60 KT	70 MPH
Thu	Jan 4	1200 UTC	24 Hour	36.6N 72.0W	85 KT	100 MPH
Fri	Jan 5	0000 UTC	36 Hour	43.1N 67.2W	65 KT	75 MPH
Fri	Jan 5	1200 UTC	48 Hour	48.0N 66.8W	45 KT	50 MPH
-	-	-	-	-	-	-
-	-	-	-	-	-	-
-	-	-	-	-	-	-

Changes from Previous Advisory

This is the first advisory.

Marine Weather Impacts

An expansive area of gale to storm force winds with the potential for hurricane force gusts is forecast offshore the US East Coast and Canadian Maritimes. A concentrated area of hurricane force winds may develop within 100 nm for the low center tonight into early tomorrow.

Widespread seas of 20 to 40 feet are forecast for the impacted region with a large area of 30 to 50 feet occurring offshore the Northeast US and eastward to offshore the southern Canadian Maritimes.

Onshore Impact

Winter Storm Warnings are in effect from northern Florida to Maine. Wintry precipitation over northern FL, southern GA, and SC will end by this evening.

Farther to the north, heavy snow and strong winds will develop over far eastern NC this evening into tonight and then spread northward up the US east coast. There will likely be a very tight gradient between significant and very little snowfall as this system evolves. In excess of several inches of snow and blizzard conditions are considered possible for coastal areas from far SE Virginia northward into Maine. The winter impacts will likely extend farther inland across MA, CT, and ME than for points farther south but forecast uncertainty remains elevated.



WDT's next advisory will be issued at 0300 UTC

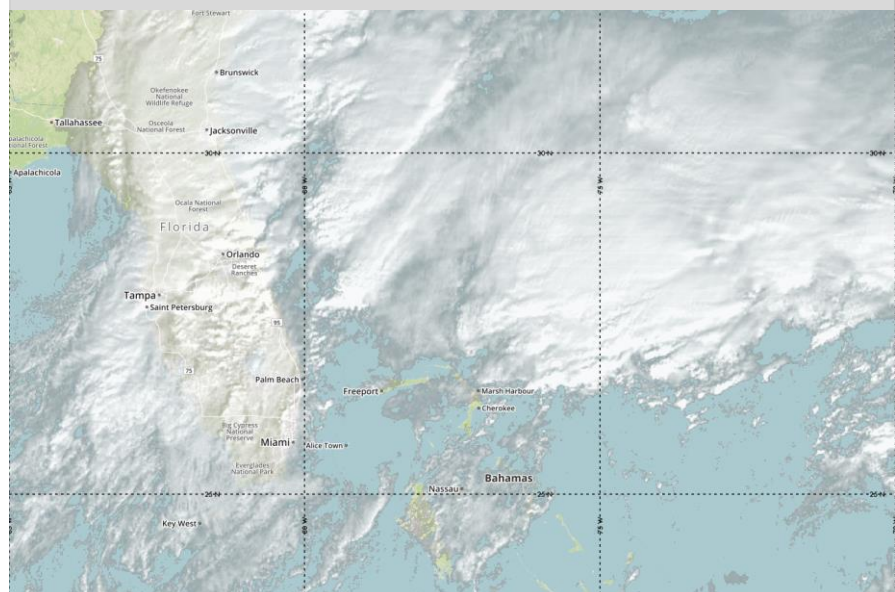
WDT Forecast Discussion

Observational Perspective: An intense disturbance is moving eastward across the southeastern United States this morning. This is beginning to interact with the sharp temperature gradient just offshore and will produce a rapidly intensifying low pressure center east of Florida by late this afternoon. Accumulating wintry precipitation has been observed from northern Florida across southern Georgia and into coastal South Carolina through the morning.

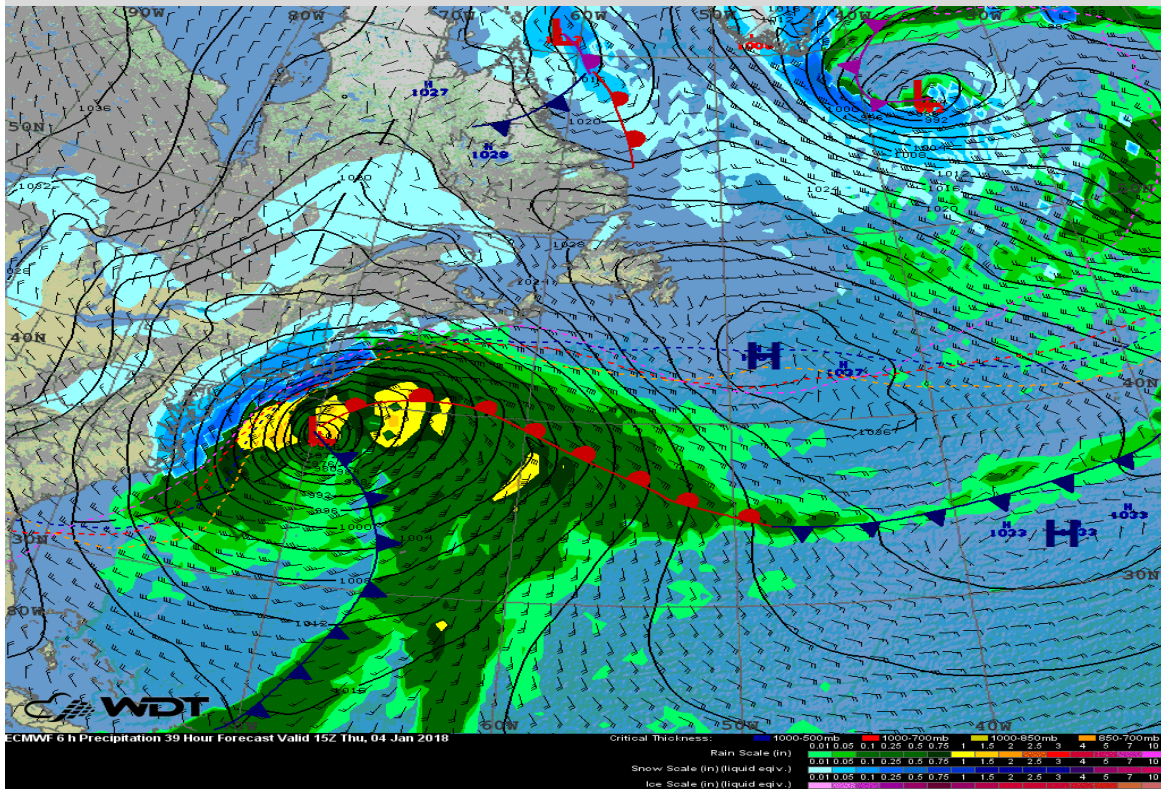
Offshore Forecast: The combination of the sharp temperature gradient offshore the eastern US (due to the recent arctic outbreak) and strong upper level support will allow this low pressure center to intensify at a tremendous rate as it accelerates northeastward up the coast. Forecast guidance suggests that the central pressure of the low may drop below 950mb as it passes offshore the Outer Banks tonight. As the low intensifies an expansive area of hazardous marine weather conditions will develop over the Western Atlantic. The low pressure center will likely reach its peak intensity by midday Thursday before the central pressures rise slightly and the wind field expands further.

Inland Forecast: Mixed precipitation will continue over eastern SC through this evening. Farther to the north a band of significant snowfall and intense winds will spread northward along the immediate US East coast on the western side of this low. Blizzard conditions are possible for locations along the coast from far eastern NC to Maine. Uncertainty does exist in the track of the heaviest snow so please refer to local forecast and warning products for more information.

Satellite Image



24 Hour Forecast Surface Chart



48 Hour Forecast Surface Chart

